

Lymington Rowing Club Navigation Areas:

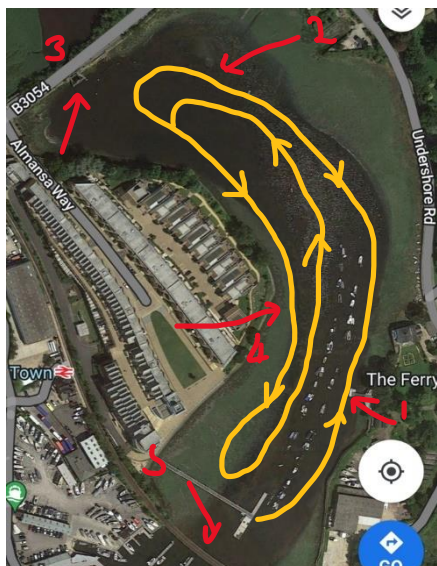


Figure 1: 'Lagoon' Area

Lagoon Area: (only useable HW +/- 2hrs approx.)

Anti-clockwise circulation pattern.

Hazards:

1. Pontoon sticking out
2. Shallow water
3. Sluice gates – strong currents avoid this area
4. Shallow water on the bend
5. Bridge – avoid being swept onto bridge, particularly on spring tides

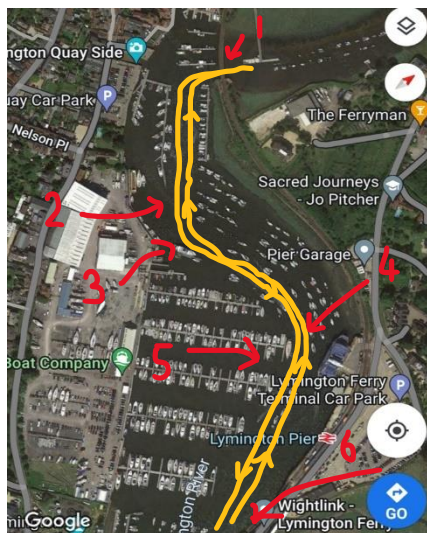


Figure 2: Pontoon to Ferry Terminal

Pontoon to Ferry Terminal

Narrow, winding channel with a high density of traffic.

Hazards:

1. Bridge. ***High risk of capsize if rowing boat ends up sideways on to bridge*** Particular care needed on spring tides
2. Vessels in and out of Town Quay moorings – particularly busy during the summer.
3. Sailing boats in and out of Berthon pontoons – particularly busy on Thursday evenings
4. Tight bends with restricted visibility – observe slow speed & keep sharp lookout
5. Boats, particularly large motor boats, in and out of Berthon may not see you or may have restricted manoeuvrability.
6. Ferry terminal. Be aware of ferry movements & side wash, particularly in E winds.

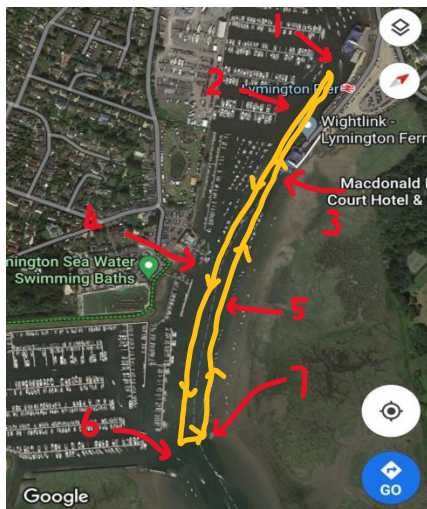
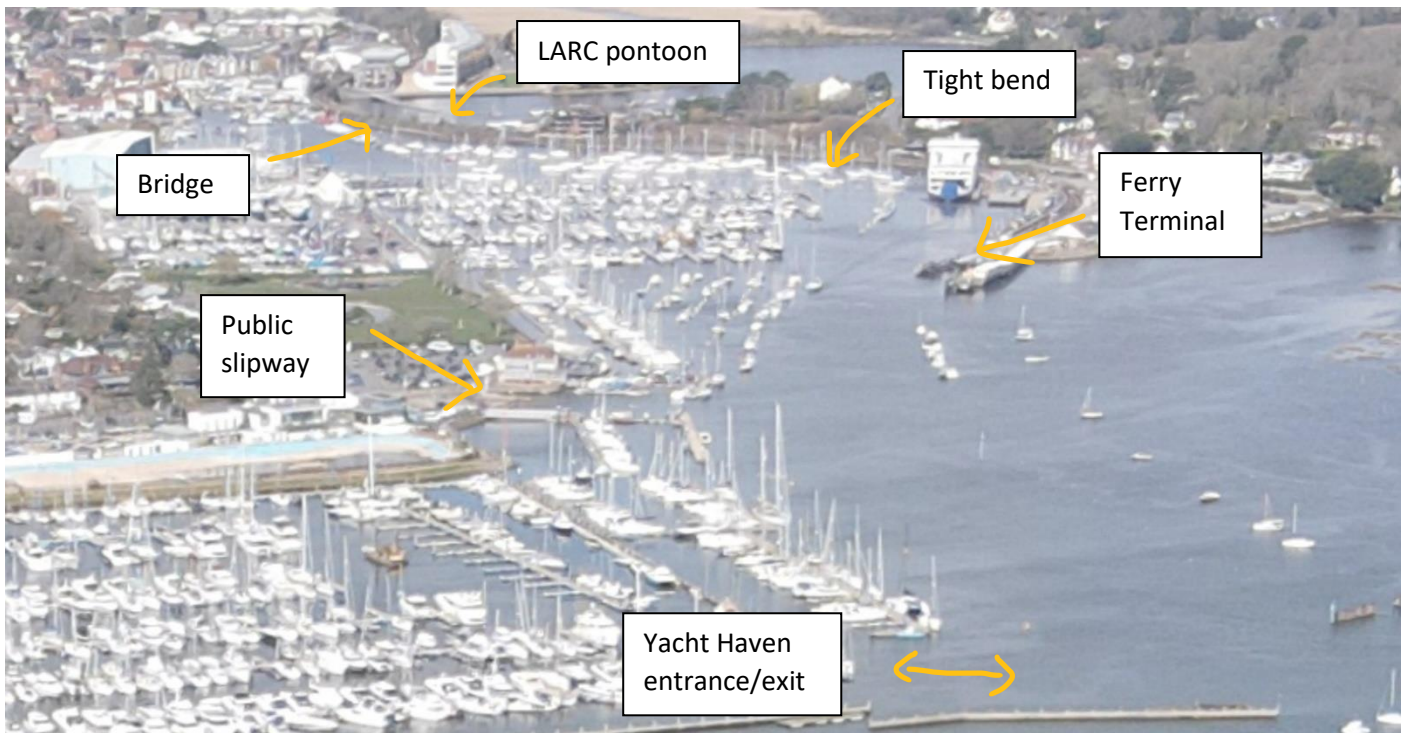


Figure 3: Ferry Terminal to Wave Barrier

Ferry Terminal to Wave Barrier:

Hazards:

1. Tight bend – watch for traffic emerging
2. Vessels leaving Berthon may have restricted manoeuvrability
3. Ferry terminal – be aware of ferry movements and potentially strong sidewash from ferry, particularly in E winds
4. Busy public slipway. Particularly busy with sailing dinghies Monday & Wednesday evenings, Saturdays & Sunday mornings but be aware at all times. Rowing boats must give way to sailing boats.
5. Keep clear of moored boats and green navigation post, particularly in prevailing SW winds when rowing boats will tend to be blown towards to the boats. Ensure coxes make allowance for span of blades.
6. Be aware of traffic entering and leaving Yacht Haven and arriving / leaving on the visitors berths on the pontoons – may not expect to see rowing boats.
7. Cross channel at right angles and keeping a good lookout. Do not wait around in the middle of the river!



Wave Barrier to Pylewell Lakes:

Follow navigation rules in main channel. Pylewell Lakes dry out and are only navigable HW +/- 2 hrs approx. but see tidal curves for more detail. Water can be choppy in wind against tide conditions. Tide flows fast in Pylewell on spring tides and can empty quickly!

1. In strong SW winds Short Reach can be choppy
2. Cross the navigation channel at right angles
3. Keep N of moored boats as the water is deeper this side
4. Shallow water on N bank. Deeper water follows S bank.
5. Be aware of swell coming in from open Solent here, particularly in SW winds

Figure 4: Wave Barrier to Pylewell



Entrance to Pylewell to Open Solent:

Only accessible to fine boats in 'no wind' conditions. Be aware that speed limit for powered vessels from wave barrier outwards is 6 knots and wash has the potential to swamp fine boats.

Open Solent particularly choppy in wind against tide conditions. Always go out against the prevailing elements and back with. Be aware of tide/condition change during outings and carry out dynamic risk assessments during outing. Modify plans if needed.

Figure 5: Entrance to Pylewell to Open Solent